



NEW ITEMS – Chrysler/Ford/Nissan/BMW



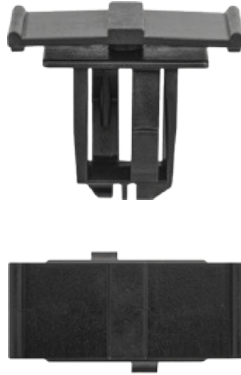
Manufactured to meet or exceed original equipment specifications.

Photos Actual Size

Wheel Opening Flare Moulding Clip

- RAM Pick-Up 4500 and 5500 2011–2018
- Chrysler OEM No. 68146440AA
- 12.75mm x 31mm Top Head Size
- 13.75mm x 22mm Bottom Head Size
- 8mm x 14mm Stem Dia.
- 21mm Stem Length
- 26.3mm Overall Height
- Black Nylon

Item No.	Qty.
1619969	15



Lower Cab Moulding Clip with Sealer

- Ford F-150 and F-250 2015+
- Not Available from OEM
- 9.5mm x 20mm Top Head Size
- 14mm x 20mm Bottom Head Size
- 21.9mm Stem Length
- 27mm Overall Height
- Fits into 9mm Hole
- Blue Nylon

Item No.	Qty.
1619979	10



Headlight and Instrument Panel Retainer

- Ford F-150 2018
- Fusion and Lincoln MKZ 2013–2018
- Ford OEM No. W717082-S300
- 19mm Head Dia.
- 7.6mm Stem Dia.
- 22mm Stem Length
- Black Nylon

Item No.	Qty.
1619970	50



Bumper and Mud Guard Retainer

- Ford Edge 2015–2018
- Ford Ranger 2019+
- Ford OEM No. W718046-S300
- 12.5mm Head Dia.
- 7mm Stem Dia.
- 9mm Stem Length
- Black Nylon

Item No.	Qty.
1619978	25



Hole Plug

- Nissan Versa Note 2014–2015
- Nissan OEM No. 74849-JD00B
- 22mm Head Dia.
- Fits into 16mm Hole
- Black Nylon

Item No.	Qty.
1619971	25



Front and Rear Door Panel Screw Grommet

- Ford Ranger 2019+
- Ford OEM No. W711501-S300
- M5 Screw Size
- 22mm Head Dia.
- 12.5mm Stem Length
- Fits into 9.4mm Square Hole
- Natural Nylon

Item No.	Qty.
1619980	25



Air duct Nylon Rivet

- BMW 4, 5 and M Series 2015–2018
- BMW 8740i, 750i and M760i 2020+
- BMW OEM No. 07-14-7-378-241
- 6mm Dia.
- 3.0mm - 8.0mm Grip Range
- 12.5mm Flange Dia.
- White Nylon

Item No.	Qty.
1619973	25





NEW ITEMS – Mercedes/VW/General Purpose



Manufactured to meet or exceed original equipment specifications.

Photos Actual Size

Rocker Moulding Clip with Sealer

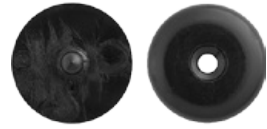
- Mercedes-Benz A 220, B 250 e, C 250, C 300, C 350, C 63, CLA 250, CLA 45, CLS 400, CLS 550, CLS 63, CLS 63 S, E 250, E 350, E 400, E 550, E 63, E 63 S, GLA 250 and GLA 45 2010+
- Mercedes OEM No. 000-991-72-98
- 24mm Top Head Dia.
- 32mm Bottom Head Dia.
- 23mm Stem Dia.
- 16mm Stem Length
- Fits into 20mm Hole
- 39mm Overall Height
- Use with 1505971
- White Nylon

Item No.	Qty.
1619977	15



Seat Belt Stop Button

- Audi A3, A4, A4 allroad, A5 Sportback, A6, A7, A8, Q3, Q5, Q7, Q8, RS5 Sportback, S3, S4, S5 Sportback, SQ5 and e-tron Quattro 2019+
- Volkswagen Arteon, Atlas, CC, Cabrio, Eos, GTI, Golf, Golf Alltrack, Golf R, Golf Sportwagen, Jetta, Passat, Phaeton, Rabbit, Tiguan and Touareg 1993+
- VW OEM No. 443-857-847-B-4PK
- 16mm Dia.
- Black Nylon
- 2 Piece Set



Item No.	Qty.
1619974	25

Trunk and Door Hole Plug

- Mercedes-Benz A 220, CLA 250, CLA 45, E 400, E 450, E 53, S 550, S 560, S 63 and S 65 2017+
- Mercedes OEM No. 003-998-13-50
- 22mm Head Dia.
- Fits into 16mm Hole
- Black Nylon

Item No.	Qty.
1619976	25



General Purpose Nylon Blind Rivet

- General Purpose/Universal
- 4mm Hole Dia.
- 1.5mm - 4.5mm Grip Range
- 8mm Flange Dia.
- 2.5mm Flange Height
- 48mm Overall Length
- Black Nylon

Item No.	Qty.
1619972	50



Motion Sensor Push-Type Retainer

- Mercedes-Benz E 300, E 400, E43, E 450, E 53 and E 63 S 2017+
- Mercedes OEM No. 001-990-22-92
- 12mm Head Dia.
- 5mm Stem Length
- Fits into 5mm Hole
- Black Nylon

Item No.	Qty.
1619975	25

