



Manufactured to meet or exceed original equipment specifications.

Photos Actual Size

## Windshield Setting Block with Sealer

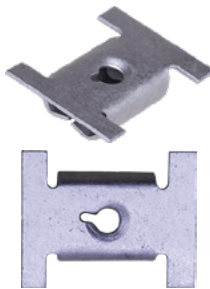
- Ford F150 2004-2014
- Lincoln Mark LT 2006-2008
- Ford OEM Nos. 9L3Z-14060A12-A, 4L3Z-1503296-AB
- 30.5mm Width
- 38.5mm Length
- 33.7mm Overall Height
- Black Nylon



Item No.	Pkg. Qty.
KT13830	5

## Fender Apron Snap-In-Nut

- Buick Allure 2010-2021, Cascada 2016, LaCrosse 2010-2012, Regal 2011-2021
- Cadillac ELR 2014-2016
- Chevrolet Cruze 2011-2015, Impala 2015-2016, Orlando 2012-2014, Volt 2011-2019
- Saturn Astra 2008-2009
- GM OEM No. 24441317
- M4.2-1.41 Screw Size
- 18mm x 23mm Head Size
- 7mm Stem Length
- Fits into 11mm Slot
- Zinc



Item No.	Pkg. Qty.
1637364	25

## Lower Center Pillar Interior Moulding Trim Clip with Metal Reinforcement

- Buick Regal 2018-2020
- GM OEM No. 13435002
- 17mm x 20mm Top Head Size
- 14.5mm x 28mm Bottom Head Size
- 12mm Stem Length
- Green Nylon



Item No.	Pkg. Qty.
1637341	25

## Body Panel Blind Rivet

- Tesla 3, S, X and Y
- Tesla OEM No. 1028719-00-A
- 3/16" Dia.
- 3/8" Flange Dia.
- 1/16" - 17/64" Grip Range
- 13/32" Rivet Length
- Aluminum Rivet and Mandrel



Item No.	Pkg. Qty.
1637368	25

## Bumper Screw Grommet with Sealer

- Genesis G70 2019+, G80 2017+, GV70, GV80 2021+
- Hyundai Accent 2018+, Genesis 2015-2016, Ioniq 2017+, Santa Fe 2019+, Sonata 2016-2017, Tucson 2016-2021
- Kia Optima 2016-2020, Cadenza 2017-2020, Telluride 2020+, Rio 2018-2021, Forte 2019-2021, K5, Sorento 2021+
- Hyundai OEM No. 86625-B1000
- M4.8 (#10) Screw Size
- 14mm x 18mm Top Head Size
- 18mm Bottom Head Dia.
- 18mm Stem Length
- Yellow Nylon



Item No.	Pkg. Qty.
1637360	25

## Fender and Bumper Phillips Truss Washer Head Tapping Screw

- Hyundai Accent, Elantra 2011+, Azera 2011-2017, EQUUS 2010-2015, Genesis 2008-2020, Ioniq 2017+, Kona 2018+, Nexo 2019-2020, Palisade, Venue 2020+, Santa Cruz 2022+, Santa Fe 2013+, Sonata 2009+, Tucson 2016+, Veloster 2019+, Venue 2020-2021, Veracruz 2012 • Kia Cadenza 2013-2020, Carnival 2022+, Forte 2014-2021, K5, Seltos 2021+, K900, Sedona 2015-2021, Niro 2017-2021, Optima 2011-2020, Rio, Soul 2012-2021, Sorento 2014+, Sportage 2010+, Stinger 2018-2021, Telluride 2020+
- Hyundai and Kia OEM No. 12493-05167-E
- M5-1.61 x 16mm
- 14mm Washer Dia.
- #2 Phillips Drive
- AB Point
- Black Zinc



Item No.	Pkg. Qty.
1637367	25



Manufactured to meet or exceed original equipment specifications.

Photos Actual Size

## Rocker Moulding Clip with Sealer

- Hyundai Genesis G80 2021+, Sonata 2020-2021
- Kia K5 2021
- Hyundai OEM No. 14202-14120-B
- 16mm x 18mm Top Head Size
- 18mm x 20mm Bottom Head Size
- 12mm x 15mm Stem Size
- 16mm Stem Length
- Fits into 13mm Hole
- 1.5mm Panel Range
- Yellow Nylon



Item No.	Pkg. Qty.
1637342	25

## Cowl Vent Push-Type Retainer

- BMW 740, 750 1995-2001, X4 2015-2018
- BMW OEM No. 51-71-8-195-811
- 11mm x 18mm Head Size
- 13.5mm Stem Length
- 9mm Stem Dia.
- Fits into 8mm Hole
- 4mm Max Panel Range
- Black Nylon



Item No.	Pkg. Qty.
1637340	25

## Stone Guard and Rocker Moulding Screw Grommet with Sealer

- Mitsubishi Diamante 1997-2004, Eclipse 1995-2012, Eclipse Cross 2018-2020, Endeavor 2004-2007, Galant 1999-2012, Lancer 2002-2017, Mirage 2014-2021, Montero 2002-2006, Outlander 2007+
- Mitsubishi OEM Nos. MB361578, MR280579
- M4.2 (#8) Screw Size
- 17mm x 17mm Head Size
- 21mm Stem Length
- 24mm Overall Height
- Fits into 8mm x 10mm Hole
- White Nylon



Item No.	Pkg. Qty.
1637348	25

## Fender Apron Hex Head Sems Tapping Screw

- BMW 323Ci, 328Ci 2000, 323i 1999-2000, 325Ci, 325xi, 330Ci, 330i, 330xi 2001-2006, 320i 2007-2008 and 1999-2000, 328xi, 335i, 335xi 2007-2008, 525i, 530i 2001-2007, 525xi, 530xi, 650i, M6 2006-2007, 328i 2008-2010 and 1997-2000, 528i xDrive, 535i xDrive 2009-2010, 528xi, 535xi 2008, 535i 2008-2010, 540i 1997-2003, 545i, 645Ci 2004-2005, 550i 2006-2010, M3 2001-2008, M5 2006-2010 and 2000-2003, X3 2004-2017, Z4 2003-2016
- BMW OEM No. 07-14-7-129-161
- M4.8-1.61 x 20mm
- 8mm Hex
- 18mm Washer Dia.
- Black Zinc



Item No.	Pkg. Qty.
1637361	25

## Spoiler and Tail Lamp Mounting Grommet with Sealer

- Lexus ES250 2021, ES300h, ES350 2019-2021, IS F 2008-2014, IS250, IS350 2006-2013, LX570 2008-2016, RX350, RX450h 2010+, RX450hL 2018-2021, SC300 1992-2000, SC400 1992-1996
- Toyota Avalon, RAV4 2019-2021, Celica 1991-1993, CH-R 2017-2021, Camry 2018-2021, Celica 1990-1993, Corolla 2019-2021 and 1988-1991, Echo 2004-2005, Highlander 2020-2021, Land Cruiser 1991-2016, MR2 1990-1995, Prius 2004-2021, Sienna 2021, Supra 1988-1998, Solara 1999-2003, Tundra 2007-2014, Venza 2021
- Lexus and Toyota OEM No. 90467-09075
- 16mm x 16mm Head Size
- 14mm Stem Length
- 15mm Overall Height
- Fits into 8mm Slot
- Black Nylon



Item No.	Pkg. Qty.
1637357	25

## Rocker Moulding Clip with Sealer

- BMW 330 2019-2021, M340i 2020 2021
- BMW OEM No. 51-12-7-488-355
- 36mm Width
- 44mm Length
- 35mm Overall Height
- Green Nylon



Item No.	Pkg. Qty.
1637339	15



Manufactured to meet or exceed original equipment specifications.

Photos Actual Size

## Interior Trim Panel Clip

- BMW 228i, M235i 2020-2021, 2014-2016, 230i, M240i 2017-2021, 328d 2014-2018, 328i, 335i, 535d 2014-2016, 330i, 340i 2017-2019, 428i, 435i 2015-2016, 430i, 440i 2017-2020, 528i 2011-2016, 535i, 550i 2010-2017, 640i, 650i, M6 2012-2019, ActiveHybrid 5 2012-2016, i8 2019-2020, M2 2016-2021, M5 2013+, M8 2020+, X1 2013-2015, X3 2011-2017, X4 2015+, X5 2020, X6 2008-2021, Z4 2019-2021
- BMW OEM No. 07-14-7-321-144
- 9mm Width
- 16.5mm Length
- 11mm "U" Width
- Bright Zinc



Item No.	Pkg. Qty.
1637362	25

## Door Trim Panel Torx® Button Head Sems® Tapping Screw

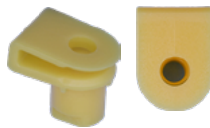
- BMW i3 2014 - 2020, X3 2018 - 2021, X4 2019+
- BMW OEM No. 07-14-7-371-720
- M5.2-2.12 x 20mm
- 18mm Washer Dia.
- T-20 Torx Drive
- Black Zinc



Item No.	Pkg. Qty.
1637363	25

## Front and Rear Bumper and Fog Lamp U-Nut

- Land Rover Discovery 2020+, Range Rover 2014+
- Land Rover OEM No. LR045194
- M3.5 (#6) Screw Size
- 2.5mm Panel Range
- 7mm from Center of Hole to Edge
- 10mm Width
- 13.5mm Length
- Yellow Nylon



Item No.	Pkg. Qty.
1637345	25

## Wheelhouse Liner Screw Grommet with Sealer

- Land Rover Defender 2020, Discovery 2017-2021, Range Rover 2012+
- Land Rover OEM No. RYH500840
- M4.2 (#8) Screw Size
- 16mm Head Dia.
- 20mm Stem Length
- 22mm Overall Height
- Fits into 9mm Hole
- White Nylon



Item No.	Pkg. Qty.
1637346	25

## Radiator Grille Clip

- Land Rover Defender 90, 110 2020, Discovery 2015-2021, LR4 2010-2016, Range Rover 2010-2021
- Land Rover OEM No. LR018173
- 19mm x 33mm Head Size
- 13mm Stem Length
- Fits into 10mm x 26mm Slot
- Black Nylon



Item No.	Pkg. Qty.
1637344	25

## License Plate Bracket Screw Grommet with Sealer

- Mercedes B 250e 2016-2017, B Electric Drive 2015, GLA 250, GLA 45 AMG 2015-2020, GLB 250 2013-2021, GLK 350 2010-2015
- Mercedes OEM No. 000-998-36-85
- M4.2 (#8) Screw Size
- 16mm Head Dia.
- 15mm Stem Length
- 19mm Overall Height
- Fits into 8mm Square Hole
- Black Nylon



Item No.	Pkg. Qty.
1637347	25